

Firmware Update Procedure for Customer

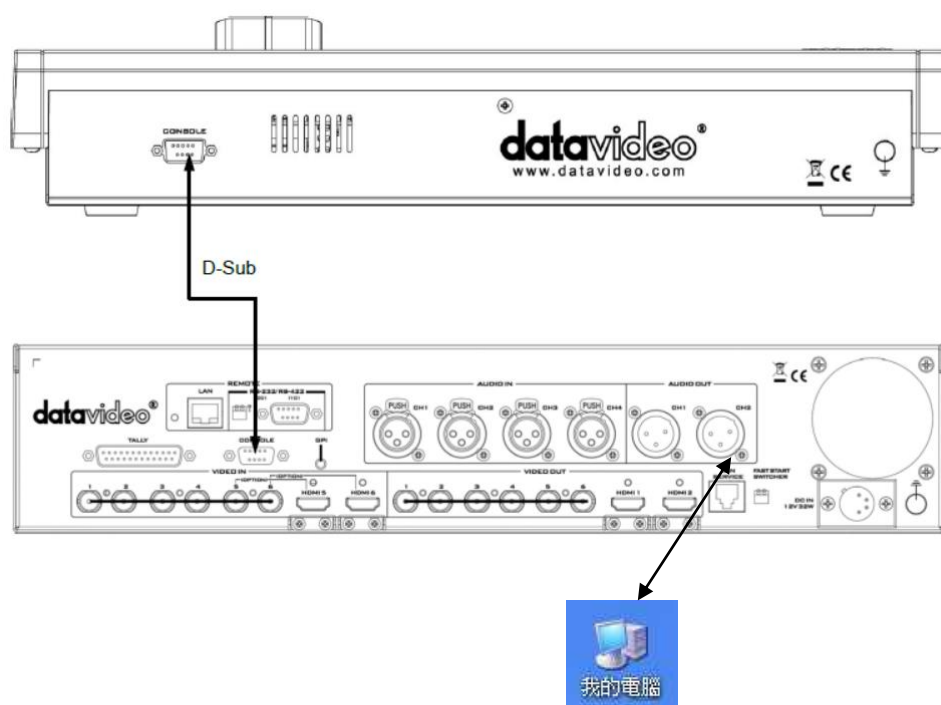
Datavideo usually releases new firmware containing new features or reported bug fixes from time to time. Customers can either download the SE-2200 firmware as they wish or contact their local dealer or reseller for assistance.

This document outlines the firmware upgrade process which should take ***approximately 10 minutes to complete***. The existing SE-2200 settings should persist through the ***firmware upgrade process, which should not be interrupted once started*** as this could result in a non-responsive unit.

Requirements

- The latest firmware update file for the SE-2200 (This can be obtained from your local Datavideo office or dealer).
- The SE-2200 power adapter.
- The SEConfig software.
- A Windows 7 computer with an Ethernet port.
- An Ethernet cable.

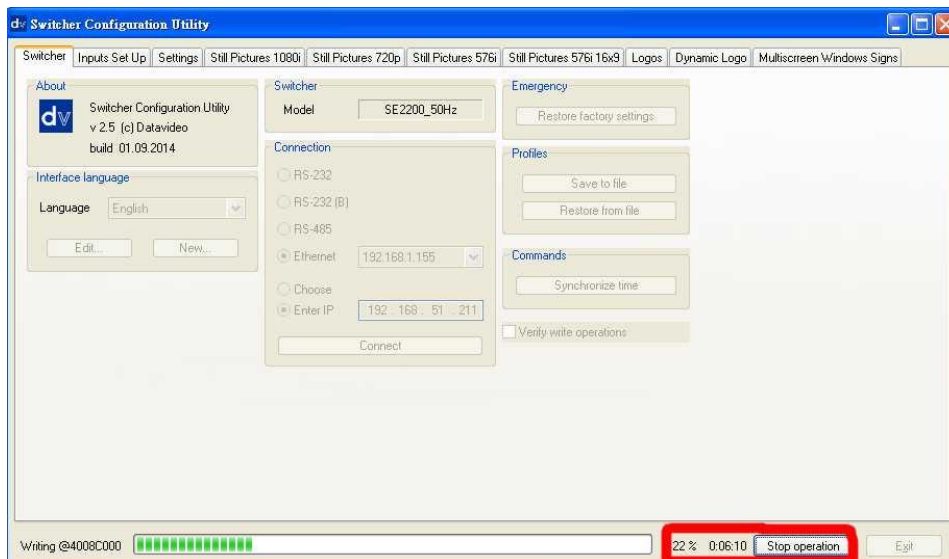
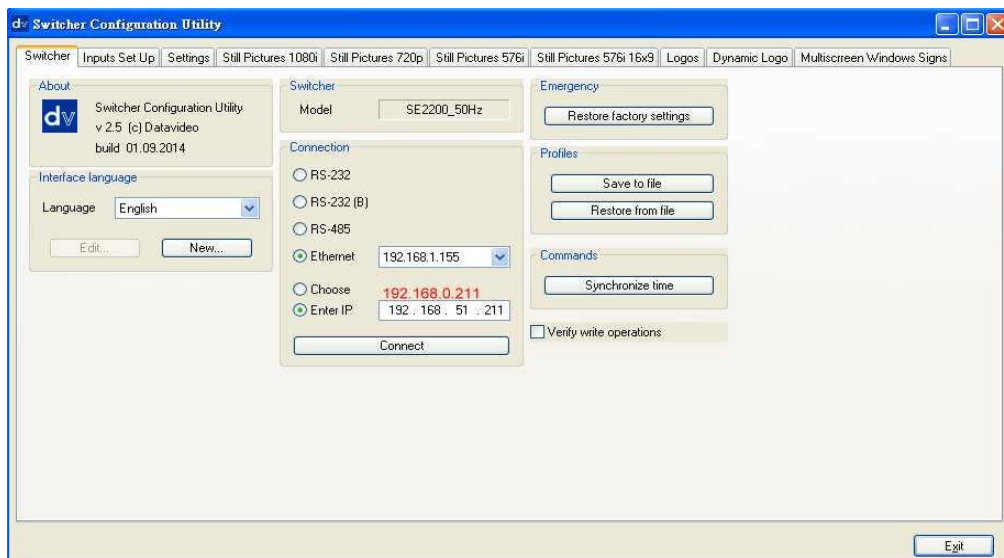
System Block Diagram



Procedure

To update the SE-2200 Switcher Configuration Utility:

1. Once the switcher is connected to the PC properly, please press the " PC CTRL" button which is located on the SE-2200 control panel.
2. Once the switcher is connected successfully, please choose "Enter IP" and then please enter the IP address of 192.168.0.211.
3. Please click " Restore factory settings"



4. The Writing process will be started, please wait until the Writing process reaches 100% and then please power off the switcher.

T-bar Correction:

1. Turn off SE-2200
2. Press and hold buttons IN1 PSET and IN1 PGM.
3. Turn on SE-2200 and only 2 LED will flashing –T-Bar bottom and T-Bar top.
4. Set the T-Bar in top position and press CUT.
5. Set the T-Bar in bottom position and press AUTO.
6. Press button CLOCK to finish the T-bar correction.

