

## Firmware Update Procedure for Customer

Datavideo usually releases new firmware containing new features or reported bug fixes from time to time. Customers can either download the HS-2850 firmware as they wish or contact their local dealer or reseller for assistance.

This document outlines the firmware upgrade process which should take ***approximately 10 minutes to complete***. The existing HS-2850 settings should persist through the ***firmware upgrade process, which should not be interrupted once started*** as this could result in a non-responsive unit.

### Requirements

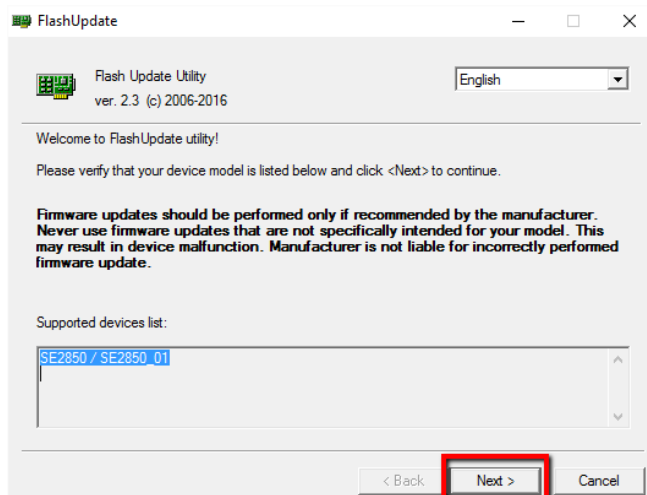
- The latest firmware update file for the HS-2850 (This can be obtained from your local Datavideo office or dealer).
- The HS-2850 power adapter.
- The SEConfig software.
- A Windows 7 computer with an Ethernet port.
- An Ethernet cable.

### Keyboard Firmware Update

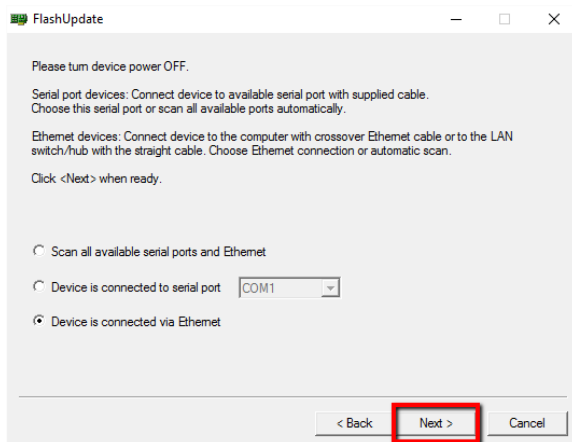
1. Switch off or shut down the HS-2850 and Computer in the normal way.
2. Connect the Ethernet cable between the HS-2850 rear panel and the Windows 7 Computer.
3. Turn on the Windows 7 Computer.
4. Unzip the firmware update folder to the Computer Desktop so the file within it is easy to locate.
5. Double click the firmware update icon to launch the Flash Update Utility.



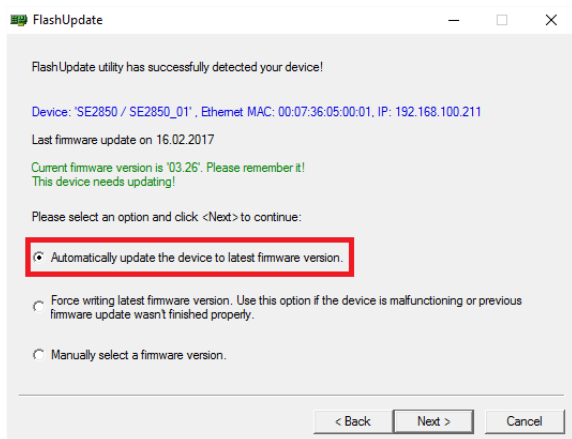
6. Confirm the supported devices list says ***HS-2850*** then click ***NEXT***.



## Updating the HS-2850 firmware:



7. The following window will be displayed. Select ***Device is connected via Ethernet*** then click ***NEXT***.



8. ***POWER ON*** the ***HS-2850*** and as soon as it is discovered by the Computer, select ***"Automatically update the device to latest firmware version"*** then click ***NEXT***.

9. Click the ***Yes button*** to confirm you wish to perform the firmware update when you see the prompt window "Do you really want to perform firmware update?".

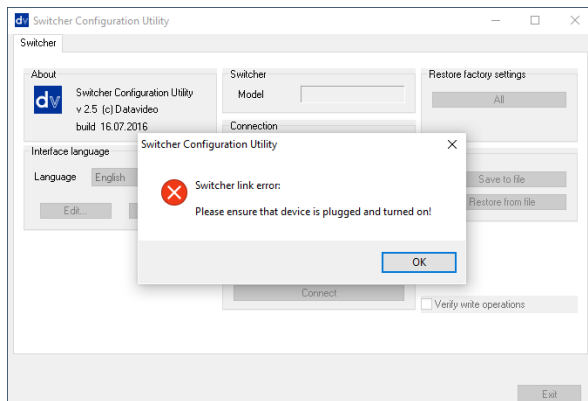
10. The update process will begin and two progress bars will be shown. The lower bar, Total Progress, will take around 15 minutes to complete.

11. Once this process is complete ***close the application*** and ***power cycle the HS-2850***.

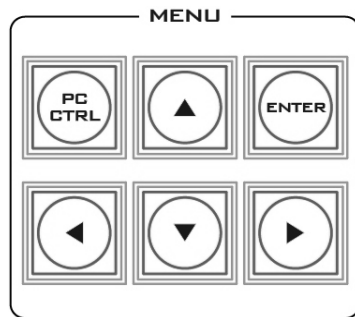
The firmware is now updated, but please continue with the following steps in order to complete the switcher's update process.

12. ***Install the SEConfig software on to the Computer***. When the HS-2850 has restarted, double click the ***SEConfig*** dv icon to launch the second part of the update process.

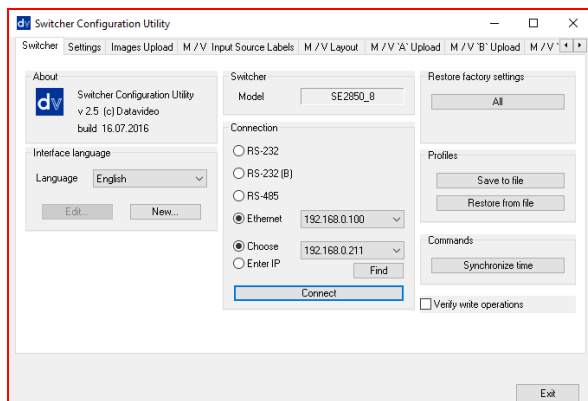




13. If you immediately get an error window, do not worry, click **OK**. This simply means that the **PC CTRL** button in the menu area of the HS-2850 control keyboard has not been enabled.



14. Press **PC Control** button so it is **ON** in the **MENU area** of the HS-2850 keyboard.



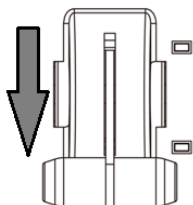
15. Select **Ethernet** to display the Computer's IP Address. Click the **Find** button to find and display the HS-2850 Switcher's IP Address in the drop down list. The first three numbers in both IP addresses should match. See below example.

16. Click **Connect** and then click **Restore Factory Settings** in the top right hand corner. The process will take approximately 45 minutes to complete.

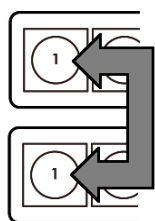
17. The next step will be to re-calibrate the HS-2850 T-Bar to get it working correctly.

## T-Bar Re-Calibration

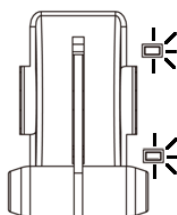
After a firmware update of the switcher it will be necessary to re-calibrate the T-Bar to get it working correctly.



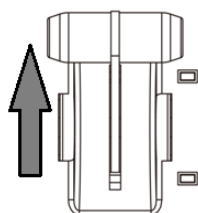
1. Move the **T-Bar** to its **lowest position**.



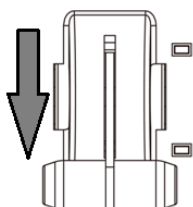
2. **Power OFF** the HS-2850 switcher.
3. Press and **hold down button 1** on both the **Program** and **Preset** rows of the switcher's keyboard.



4. **Power ON** the HS-2850 switcher while **still holding down the buttons** in step 3.
5. The switcher will start but the keyboard lights will remain dead except for the T-Bar progress LEDs. When these **LEDs flash ON and OFF** release the buttons from step 3.



6. Move the **T-Bar to almost its top position (2-3mm away)** and then press the **CUT button**.



7. Move the **T-Bar back to almost its lowest position (2-3mm away)** and then press the **AUTO TAKE button**.



8. To exit the calibration procedure, press the **CLOCK button**.

9. Ensure the **TIMER button** is **OFF**.

10. Test the T-Bar. If necessary change the **T-Bar Mode** in the **OSD MENU** options.

## **Monitor Firmware Update**

### **Requirements**

- The latest firmware update for the HS-2850 Monitor.

This firmware file can be obtained from your local Datavideo office or dealer.

- USB 2.0 pen drive 128MB or larger with a USB A connector.

### **How to update the firmware**

1. Unzip / extract the supplied zipped archive or rar folder.
2. Delete the contents of the USB 2.0 pen drive so it is empty.
3. Transfer / copy the unzipped / extracted file to the USB 2.0 pen drive; make sure the file name is renamed to MSTFLASH.bin.
4. Plug the USB 2.0 pen drive into the USB 2.0 port labelled MONITOR F/W UPGRADE on the front of the monitor button panel.
5. Reboot **HS-2850** and the update will be automatically in progress.
6. The **HS-2850 Monitor** will reboot itself at the end of the process.