

Name: SwitcherImageImEx

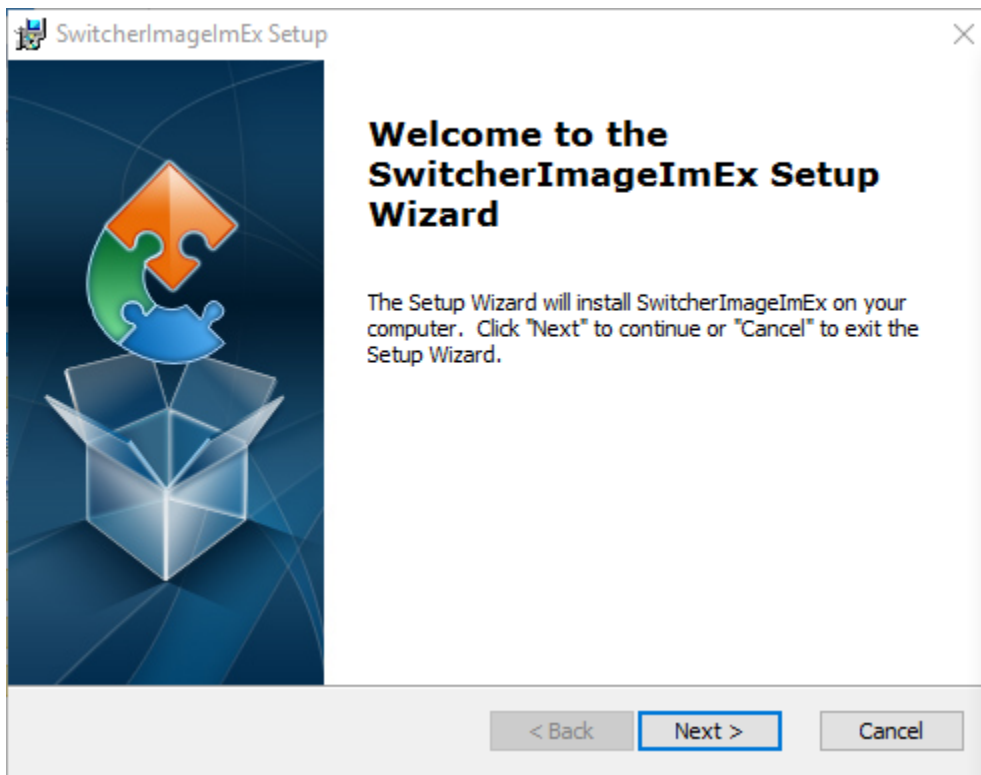
Version: Windows PC Ver. 0.9.7.5

Primary Functions:

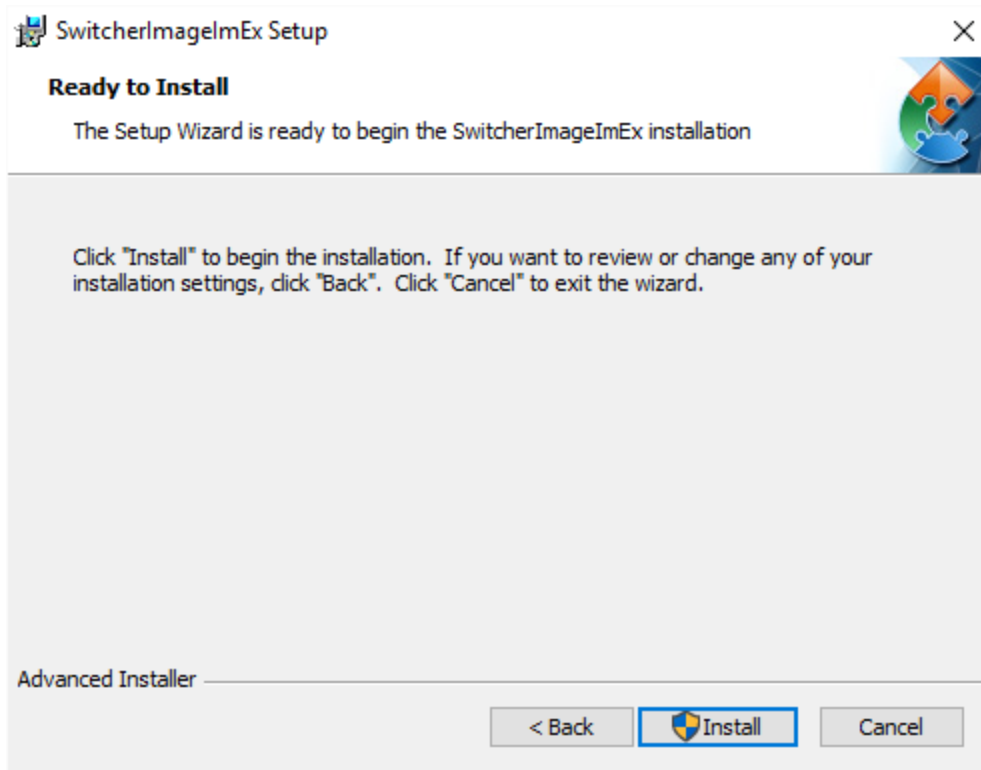
- Import still pictures from the PC to the designated Still number of the switcher. The supported file formats are BMP, JPG, PNG, and PIC. The minimum resolution is 1280 x 720.
- Still pictures exported from the designated Still number of the switcher to the PC are independent still pictures. The switcher always exports the original BMP files.
- Import/export user memory slots to and from the PC, thereby allowing the user to easily switch settings between machines.
- Import still pictures (Logo, Picture, Still Image and etc) from the PC to the Clip number of the switcher. The supported file formats are BMP, JPG, PNG and PIC. The optimal resolution is 1920 x 1080.
- Multiple language support: English / Traditional Chinese / Simplified Chinese

Installation

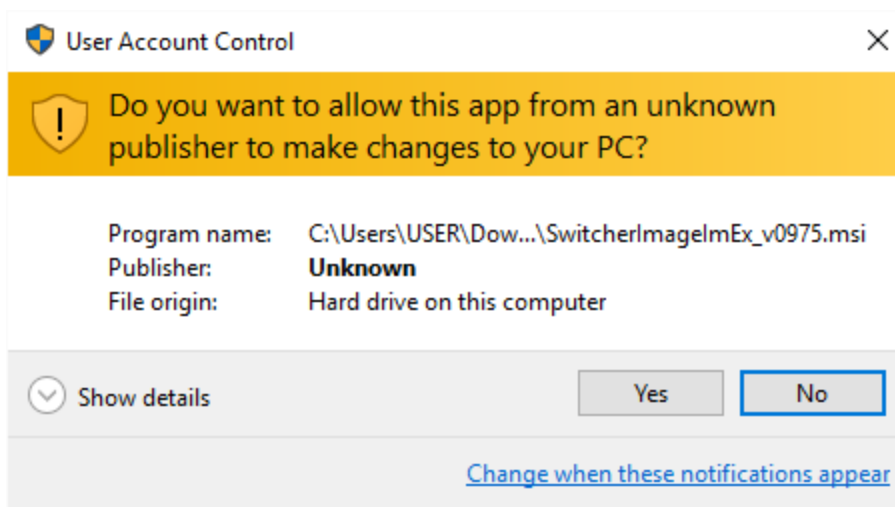
1. Download SwitcherImageImEx_vx.x.x.msi and click the icon to start the Setup Wizard.
2. Click "Next"



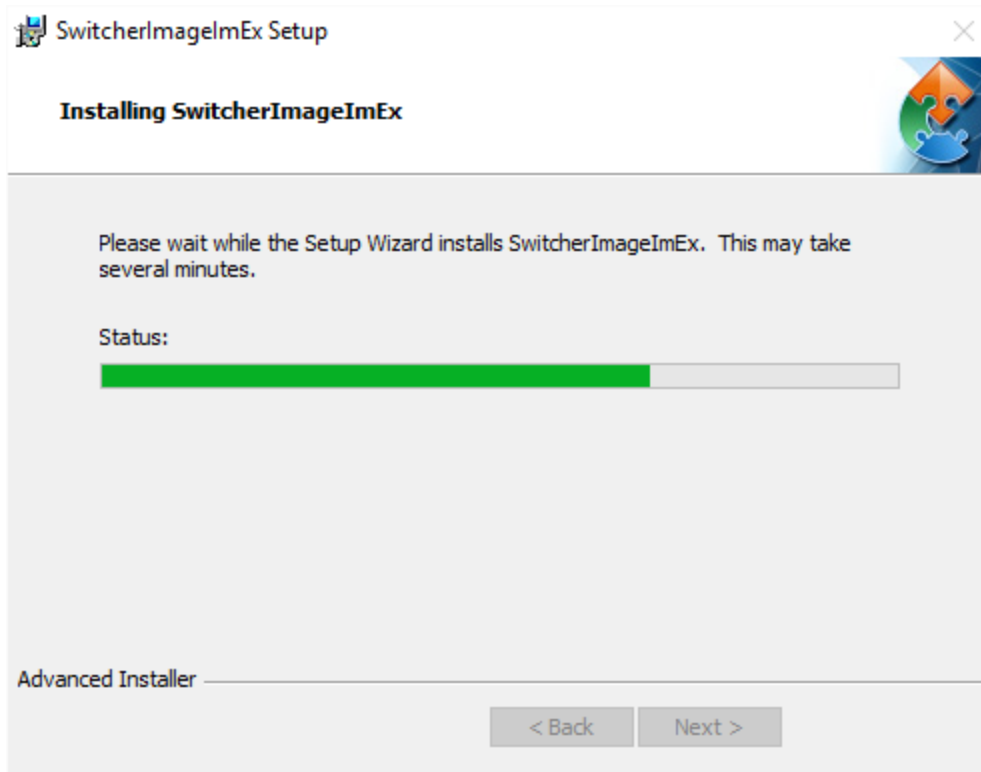
3. Click "Install"



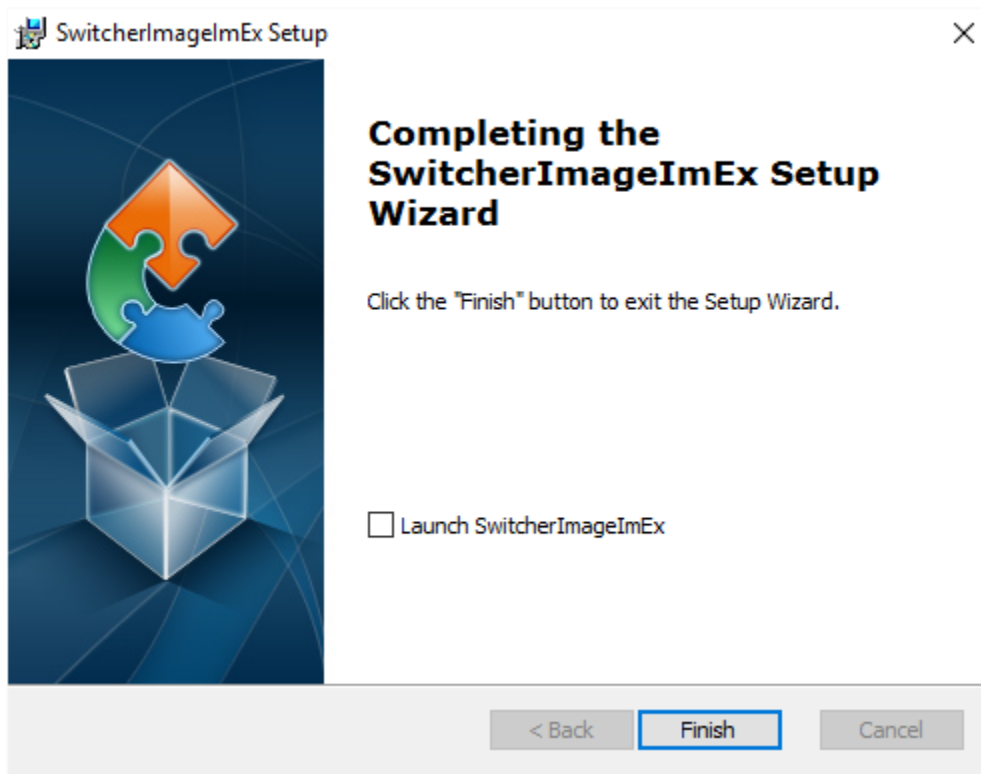
4. When you see the safety warning requesting for permission to allow an unknown publisher to make changes to the PC, please click "Yes" to continue.



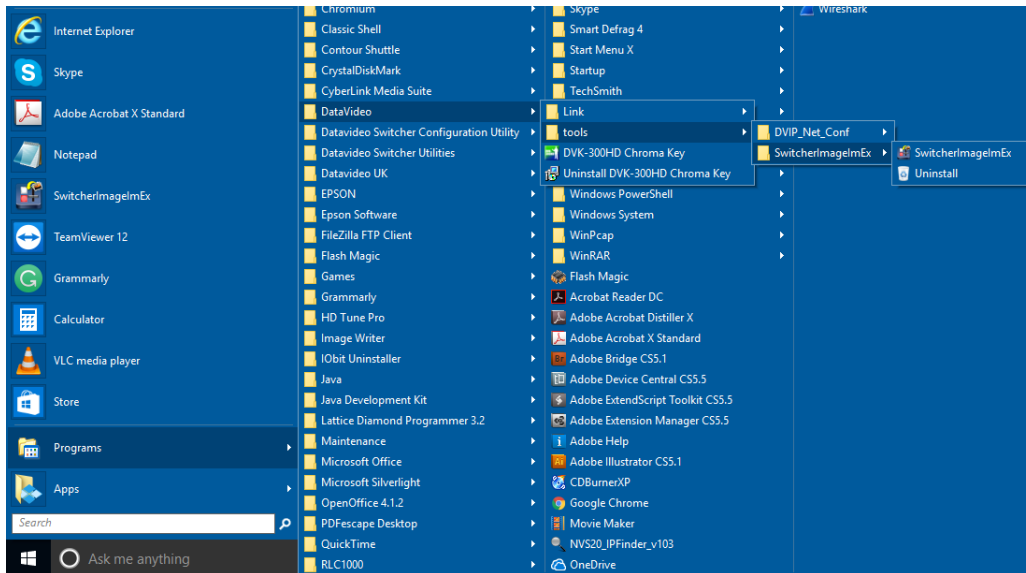
5. Wait for the installation to finish.



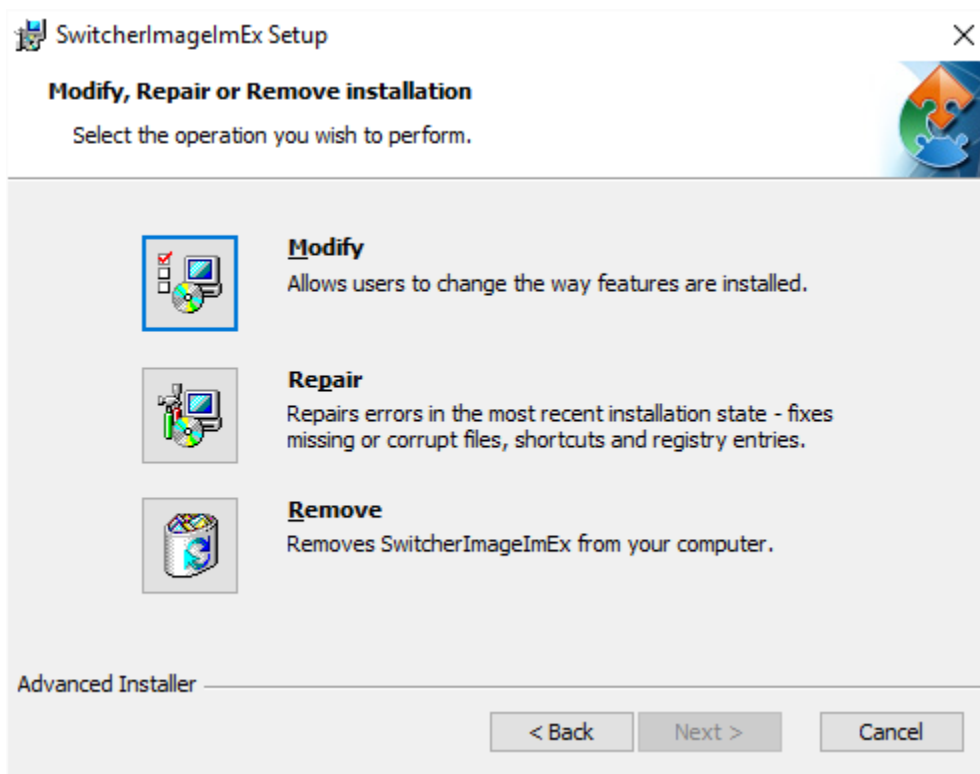
6. After the setup is complete, you will see the following window; click "Finish" to launch SwitcherImageImEx directly.



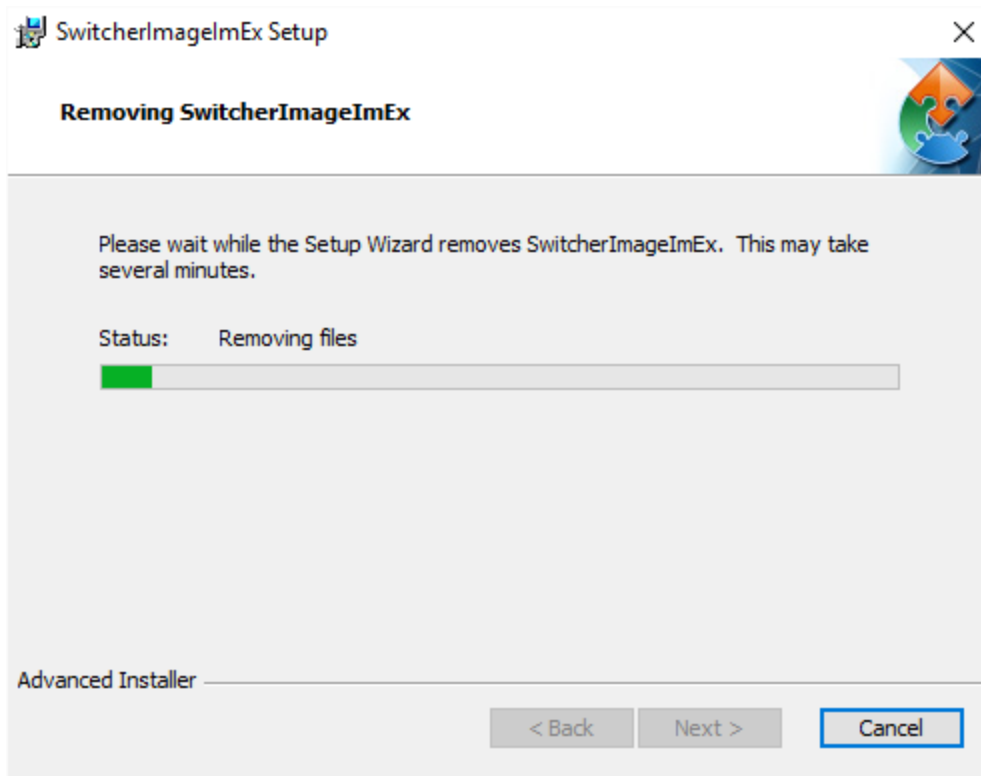
7. After the setup is finished, a shortcut will be created in Start Menu > datavideo > tools > SwitcherImagelmEx



8. Click SwitcherImagelmEx to open the program.
9. Click Uninstall to remove the program.
10. It is recommended to remove the existing program before any update and download the latest version to reinstall SwitcherImagelmEx. If the program is not removed, the user will be prompted that the PC already contains the same program.

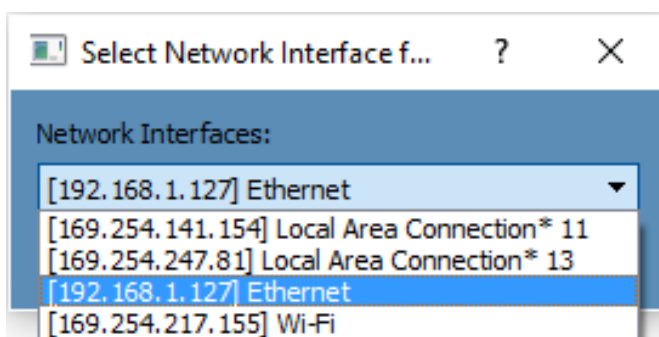


11. Select "Remove" to uninstall the program or follow instructions to remove the program using Control Panel.

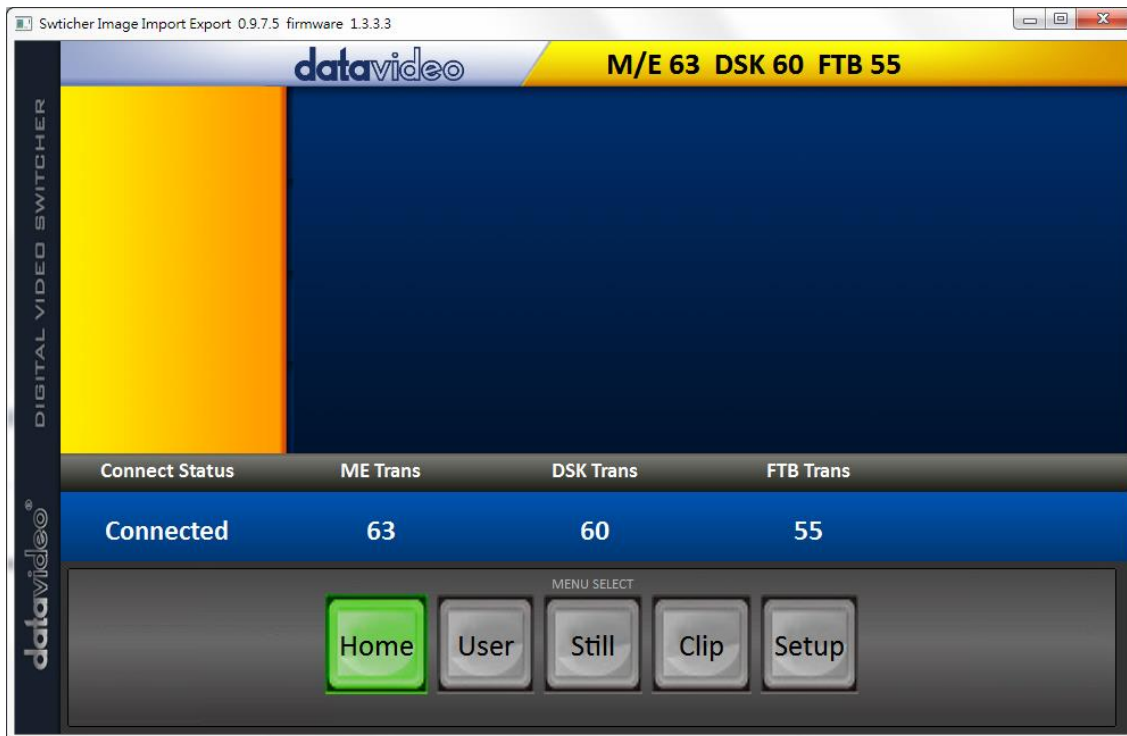


How to use?

1. When the program is executed for the first time, it will automatically scan the network and if multiple network interface cards are found, please select the card that is on the same network as the device.



2. If the available device is scanned and found, the connection will be automatically established. After the connection is successfully established, the left side of the screen will show "**Connected**" (will display **Not Connected** if disconnected).

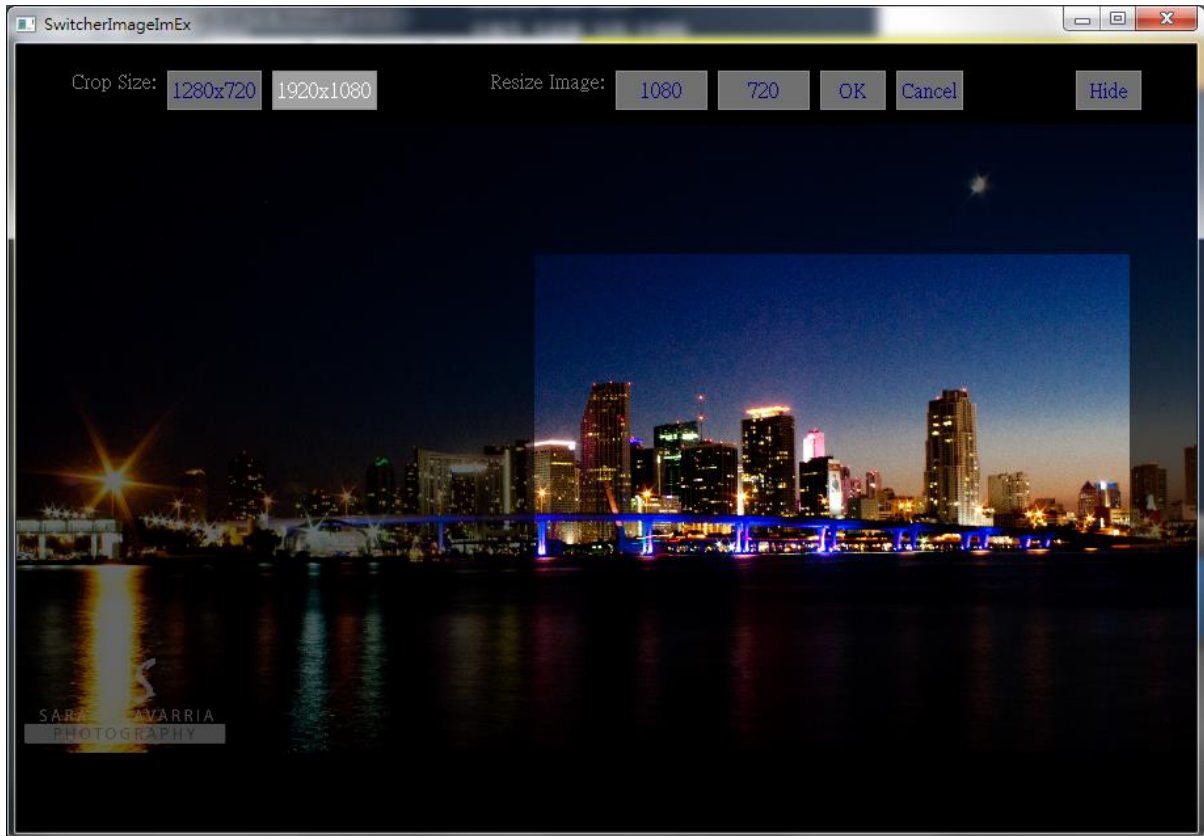


- After clicking **Setup** button, the network information will be displayed in the blue area (identical to the SE-1200 MU user control interface).



- After clicking **Import-Export**, you will be able to see four options and they are **Import Still**, **Import User**, **Import Clip** and **Export**.

- When in Import Still, click a Still number first and enter a location for storing the still. Then click Import Still again, the interface for selecting picture files will appear. If the selected picture is not 1920x1080 or 1280x720, the following interface will appear to allow you to crop or enlarge the picture.



Crop Size: Select the right crop

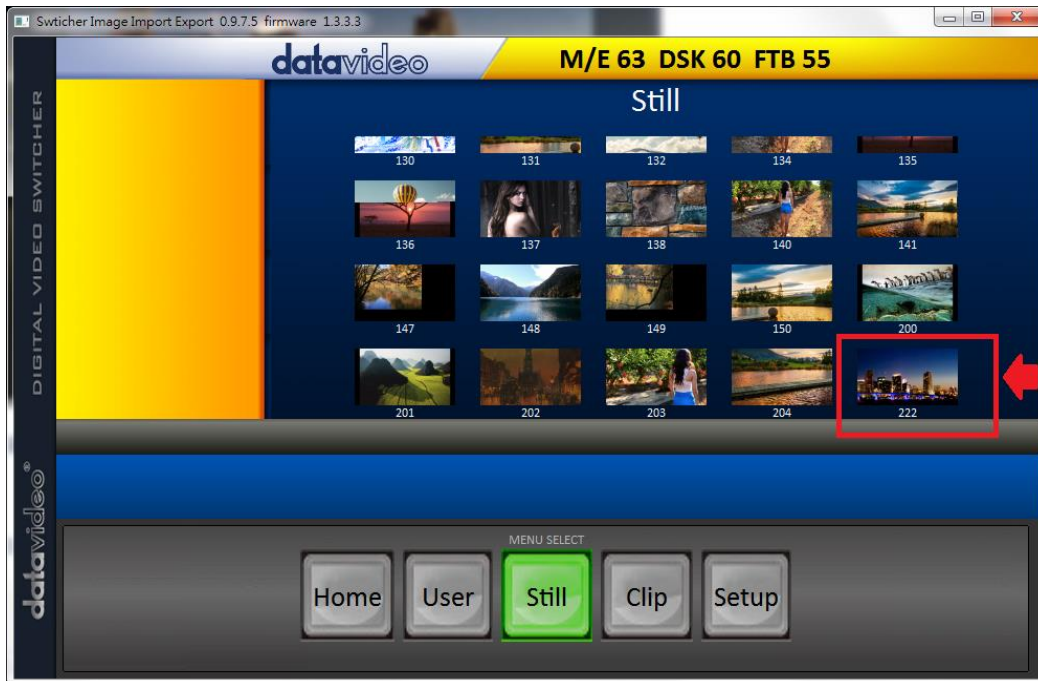
Resize Image: You will be allowed to select two sizes, large (1080) or small (720), and zoom the picture to 1920 x 1080 or 1280 x 720.

OK: Confirm the setting and apply in the switcher.

Cancel: Cancel the selection

Hide: Hide the interface

- After the right crop is selected or the resolution is correctly configured, the new settings will be automatically applied to the switcher. To confirm, click the Still button on the MENU SELECT pane to view the thumbnails.



7. Import User has the identical steps; select .mem file to import.
8. Import Clip has the identical steps; however, the sequential files must be first saved in a folder. The files are numbered using the last five characters. Select one file and the system will automatically grab the file and the rest after that.
9. Click MENU Still to preview the existing stills on the switcher.
10. Click MENU User to preview the existing user memories on the switcher.
11. Click MENU Clip to preview the existing clips on the switcher.