

## Firmware Update Procedure for Customer

Datavideo usually releases new firmware containing new features or reported bug fixes from time to time. Customers can either download the NVS-31 firmware as they wish or contact their local dealer or reseller for assistance.

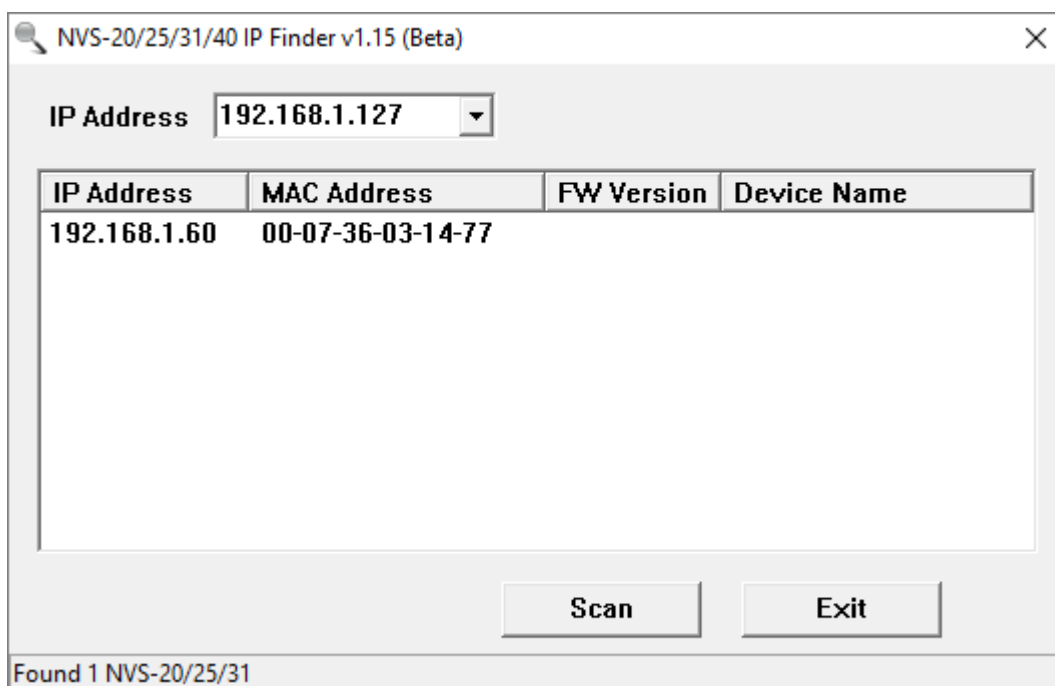
This document outlines the firmware upgrade process which should take ***approximately 10 minutes to complete***. The existing NVS-31 settings should persist through the ***firmware upgrade process, which should not be interrupted once started*** as this could result in a non-responsive unit.

### 1. Requirements

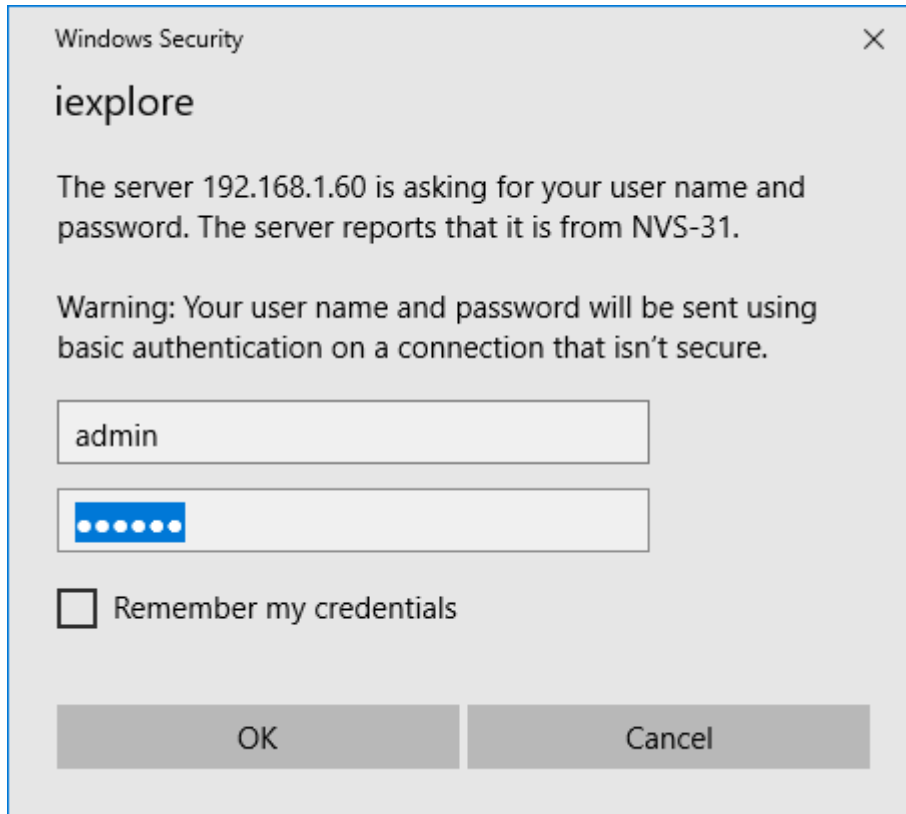
- a) HS-1600T x 1
- b) 12V Power adapter x 1
- c) Laptop x 1
- d) Ethernet Cable x 1
- e) Latest firmware version

### 2. Procedure

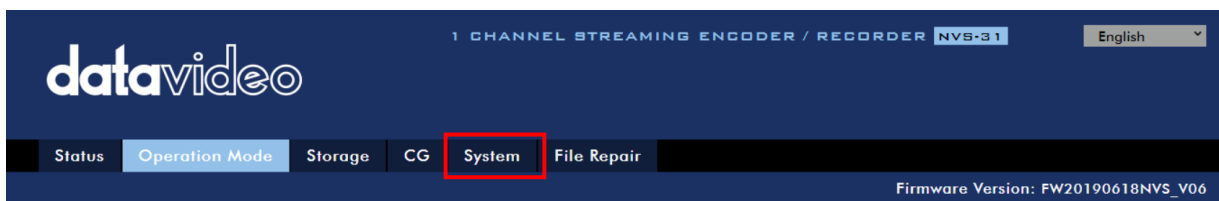
1. Directly connect your laptop to the STREAM port of the HS-1600T using an Ethernet cable.
2. Make sure the laptop and the HS-1600T are configured to IPs of the same network range.
3. Use the IP Finder to find the HS-1600T and once found, double click its IP address.



- On the browser that opens, enter the login information (User Name: admin / Password: 000000) and then click OK.



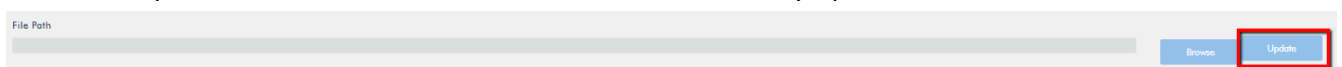
- On the NVS-31 user interface, click System tab.



- In the Firmware Update section, click the Browse button and select the latest firmware file saved on the hard disk of the laptop to which the HS-1600T is connected.



- Click the Update button after the firmware file is successfully uploaded.



8. The NVS-31 will reboot itself automatically after the firmware update is complete.

**Preparing for Rebooting!**

**37 Secs**

9. The user interface will reopen as soon as the NVS-31 is successfully rebooted.