

## Firmware Update Procedure for BC-50

### 1. Introduction

Firmware update is performed by connecting an RJ-45 Ethernet cable to a laptop and then the firmware update will be done by using a firmware upgrade tool.

This firmware update procedure applies to the following product.

Product Model	BC-50
Product Name	IP Block Camera

1. For the BC-50, there is one file with the file name: **BC-50 Firmware Update v.7.2.62**

This document describes how to perform a software update on a Windows computer.

Screen images from the Windows 10 operating system are used in this document as an example. Images used in this document may differ from the actual screens.

For details on Windows and computer operations, please refer to the instruction manual of your computer.

### 2. Preparation

#### 2.1 System Requirements

A computer that meets the following requirements is necessary to perform the firmware update procedure.

Laptop	A normal laptop is needed.
--------	----------------------------

Operation is not guaranteed on all computers that meet the above requirements

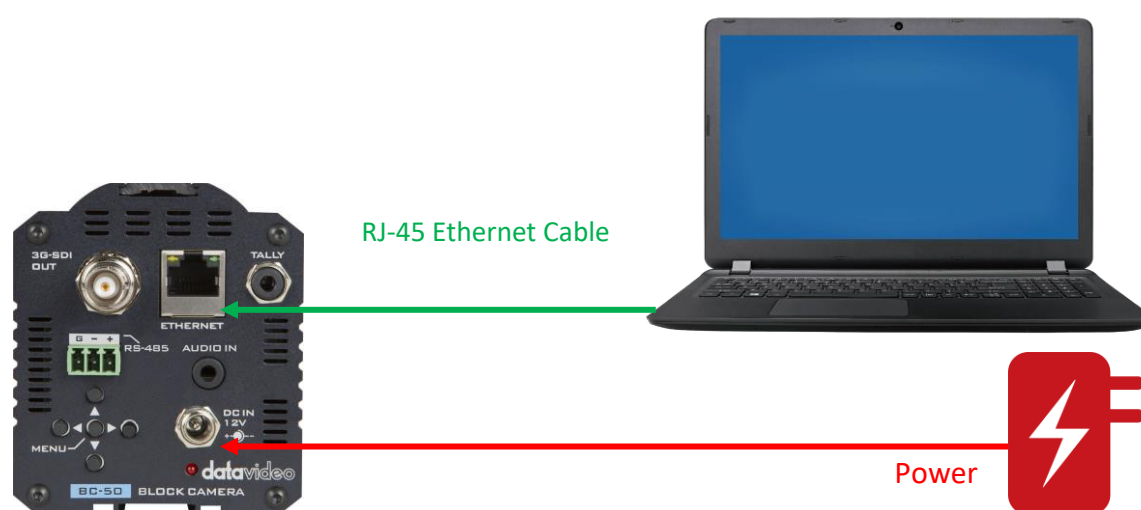
## **2.2 Software Update Preparation**

The following items are required to perform this Software update. Please prepare these items in advance before performing the update.

BC-50x 1	The BC-50 is needed for updating the firmware.
RJ-45 Etherent Cable x 1	The RJ-45 Ethernet cable for connecting the BC-50 and the laptop.
12V Power Adapter x 1	The 12V power adapter for the BC-50.
Laptop x 1	The laptop is used to download and save the firmware of the BC-50.
Latest Firmware file ● BC-50 Firmware Update v.7.2.62	The latest downloaded Software file. ● [BC-50 Firmware Update v.7.2.62].zip

## 2.3 System Connection Diagram

BC-50



## **2.4 Checking the Software Version**

### **2.4.1 Please connect an SDI cable from the BC-50 to a monitor.**

Please connect an SDI cable from the 3G-SDI OUT interface of the BC-50 to a monitor with an SDI interface and then turn on the power of the monitor (please make sure the monitor is connected to the power adapter in advance).

### **2.4.2 Please connect a DC 12V power adapter.**

Please connect a DC 12V power adapter to your BC-50 camera.

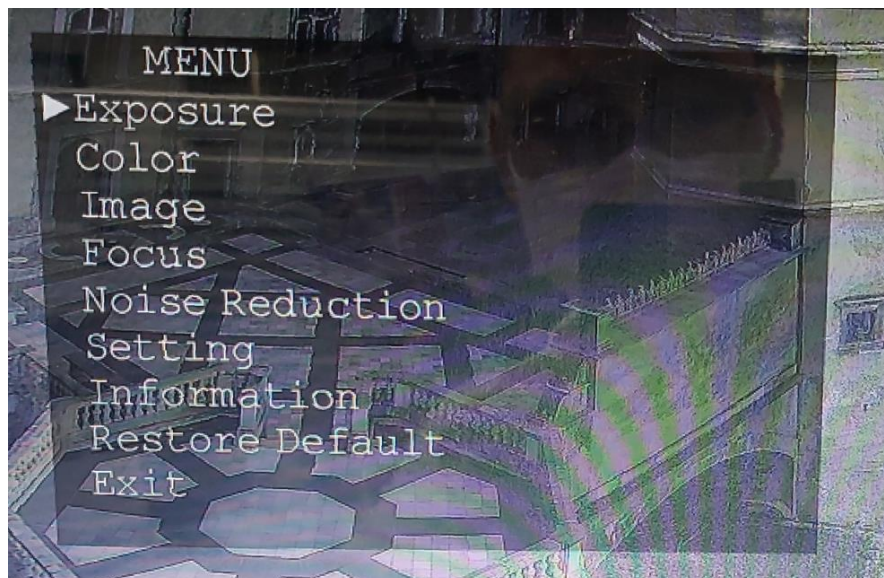
### **2.4.3 You can see the image which is shot by the BC-50 camera.**

You can see the image which is shot by the BC-50 camera from the SDI monitor.



### **2.4.4 Please press the “MENU” button from the rear panel of the BC-50 camera.**

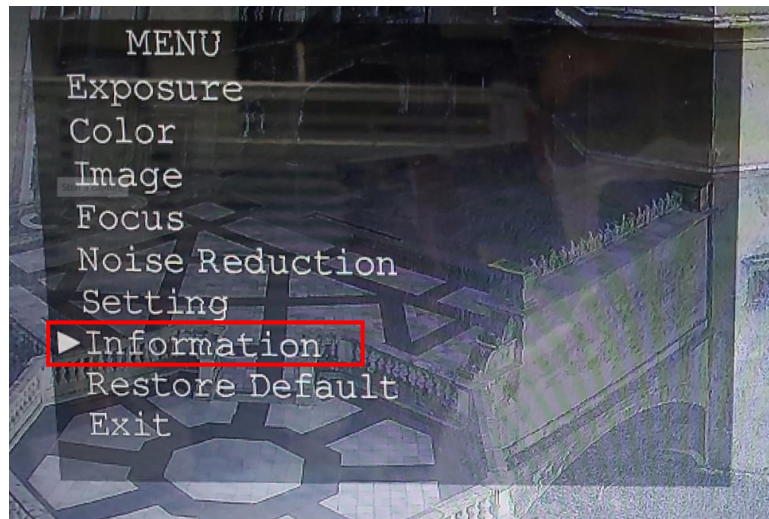
Please press the “MENU” button from the rear panel of the BC-50 camera and then you can see the OSD menu of the BC-50 camera.



#### 2.4.5 Please press the “down-arrow button from the rear panel of the BC-50 to select the “Information” option.



Please press the “down-arrow” button from the rear panel of the BC-50 to select the “Information option” from the BC-50 OSD menu.

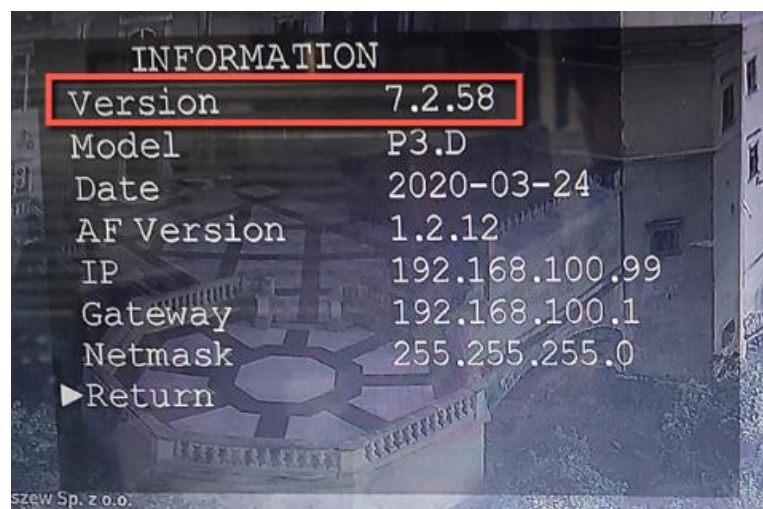


#### 2.4.6. When the “Information” option is selected, please press the “MENU” button.

When the “Information” option is selected, please press the “MENU” button from the rear panel of the BC-50 camera.

#### 2.4.7. You can see the current firmware version from the “Information” page of the BC-50 OSD menu.

You can see the current firmware version from the “Information” page of the BC-50 OSD menu which is shown in the following diagram.



## **2.5 Preparing the Firmware**

### **2.5.1. Download the Firmware**

BC-50 Product Page from the Datavideo website:

BC-50: <https://www.datavideo.com/product/BC-50>

### **2.5.2. Unzip the Firmware**


- The file name for the BC-50 “firmware is “**BC-50 Firmware Update v.7.2.62**”.

Please unzip the downloaded firmware file into the hard disk of your laptop and then you can see the following file and file folder for the BC-50.

#### ➤ **BC-50 Firmware.**

J2600\_P3.D\_V7.2.62\_24M\_20210517.img  J2600\_P3.D\_V7.2.62\_24M\_20210517.img .

#### ➤ **BC-50 Firmware Upgrade Tool.**

 upgrade v2.2

## **3. Update**

### **3.1 Updating the Software**

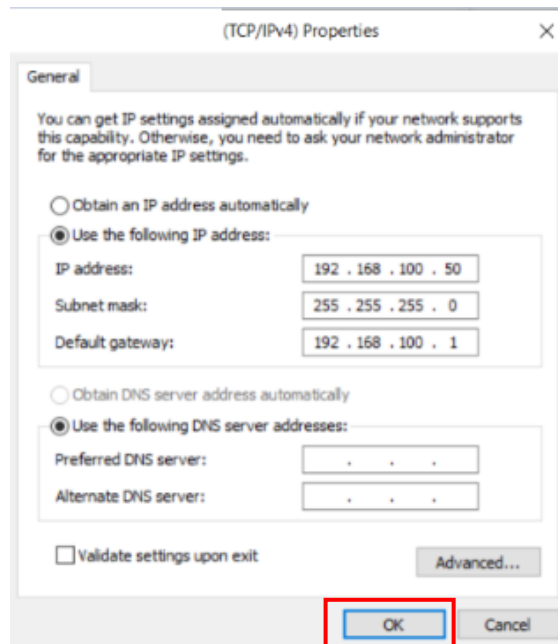
#### ● **BC-50 Firmware**

##### **3.1.1. Please set the static IP address of your laptop to be within the same LAN as the BC-50.**

Please set the static IP address of your laptop to be within the same LAN as the BC-50. The default static IP address of the BC-50 camera is “192.168.100.99”. So, we will set the static IP address of the laptop as “192.168.100.50” to be an example. After the static IP address is set, please press the “OK” button.

- Static IP address: 192.168.100.50
- Subnet Mask: 255.255.255.0
- Default Gateway: 192.168.100.1





### 3.1.2. Please connect an RJ-45 Ethernet cable from your laptop to the BC-50.

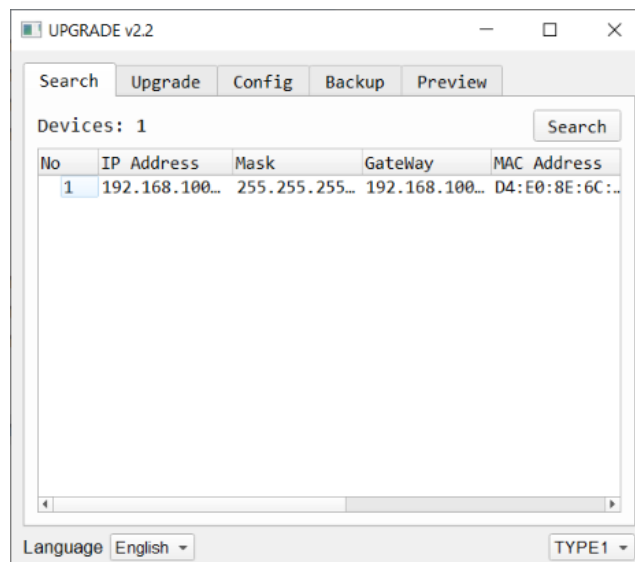
Please connect an RJ-45 Ethernet cable from the RJ-45 interface of your laptop to the “ETHERNET” interface which is located on the rear panel of the BC-50.

### 3.1.3. Please connect a 12V power adapter to the BC-50.

Please connect a 12V power adapter to the BC-50 camera. Please wait until the red power LED to flash for opening the BC-50 firmware update tool “upgrade.exe”.

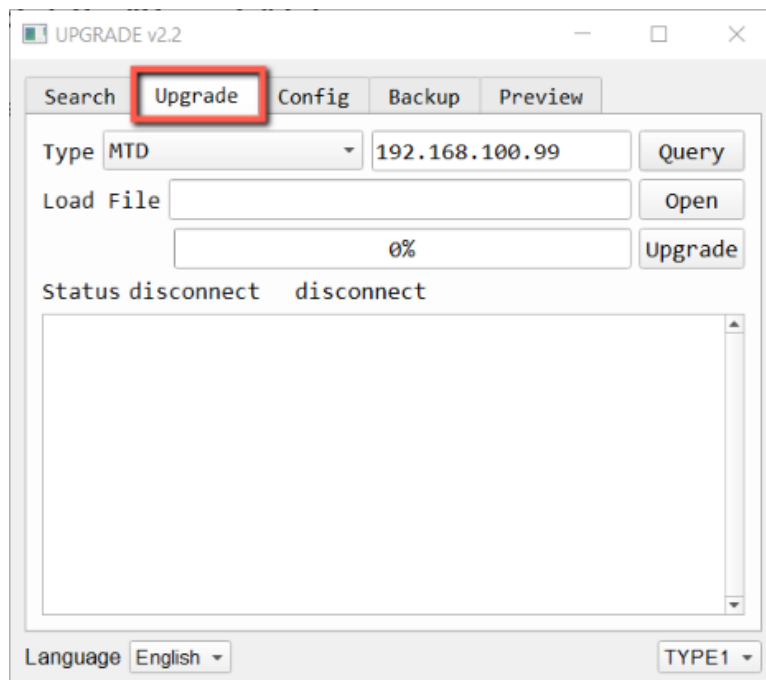
### 3.1.4. Please double-click the BC-50 firmware update tool “upgrade.exe” from the “upgrade v2.2” file folder.

Please double-click the BC-50 firmware update tool “upgrade.exe” from the “upgrade v2.2” file folder to open the BC-50 firmware upgrade tool which is shown in the following diagram.



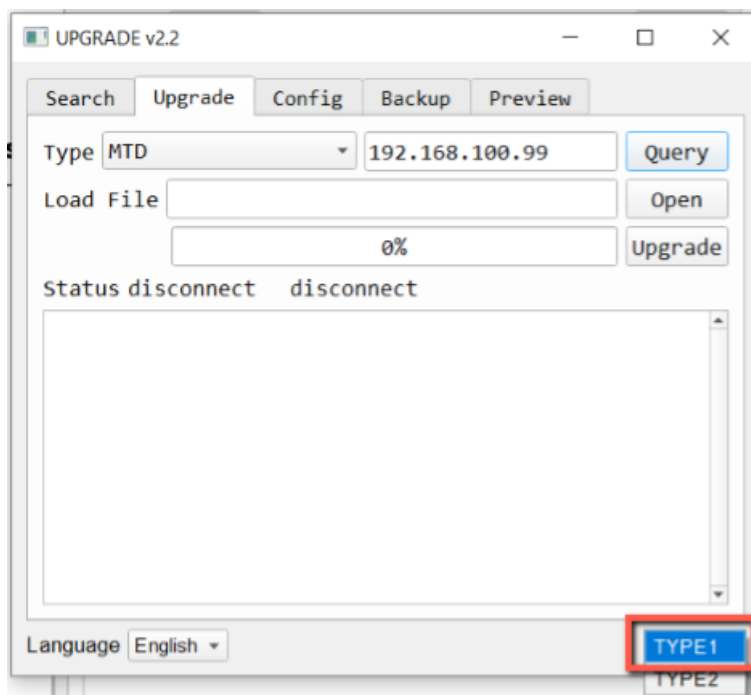
### 3.1.5. Please click the “Upgrade” tab.

Please click the “Upgrade” tab and then you can see the “Upgrade” interface which is shown in the following diagram.



### 3.1.6. Please select “TYPE1” from the drop down menu.

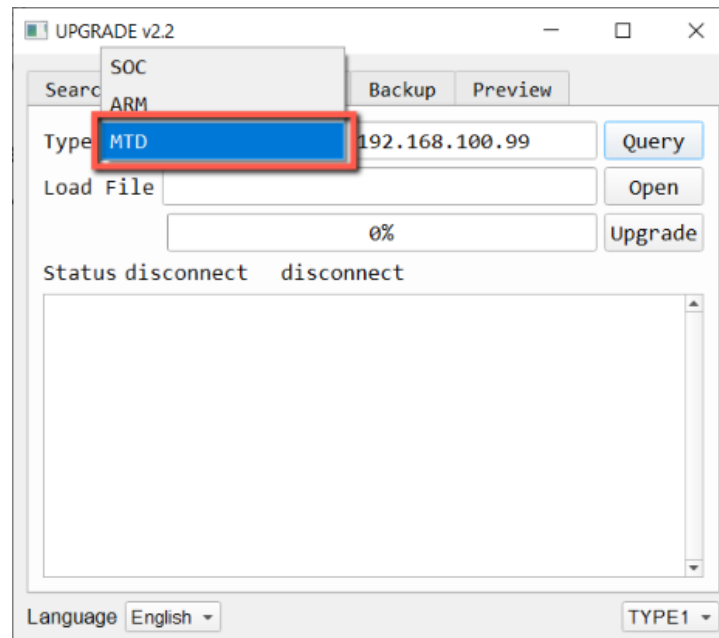
Please select “TYPE1” from the drop-down menu which is shown in the following diagram.





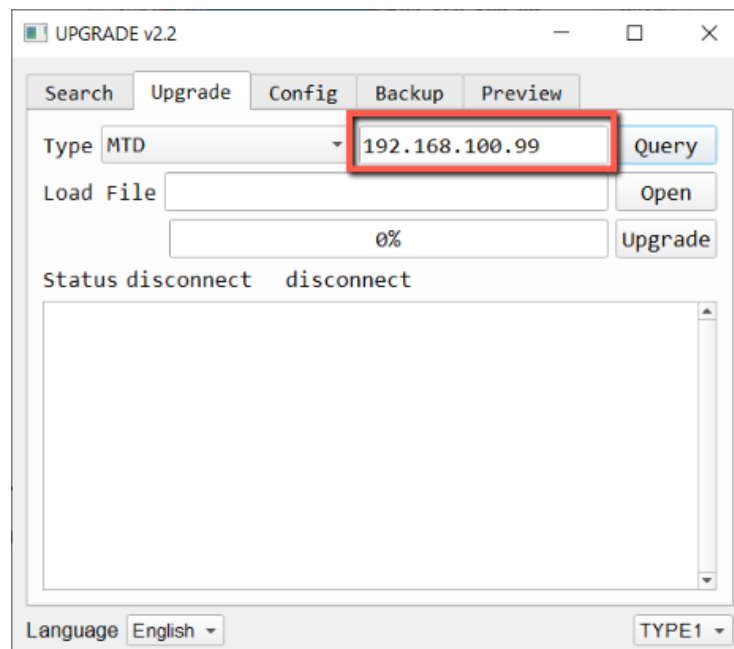
### 3.1.7. Please select “MTD”.

Please select “MTD” from the “Type” drop-down menu.



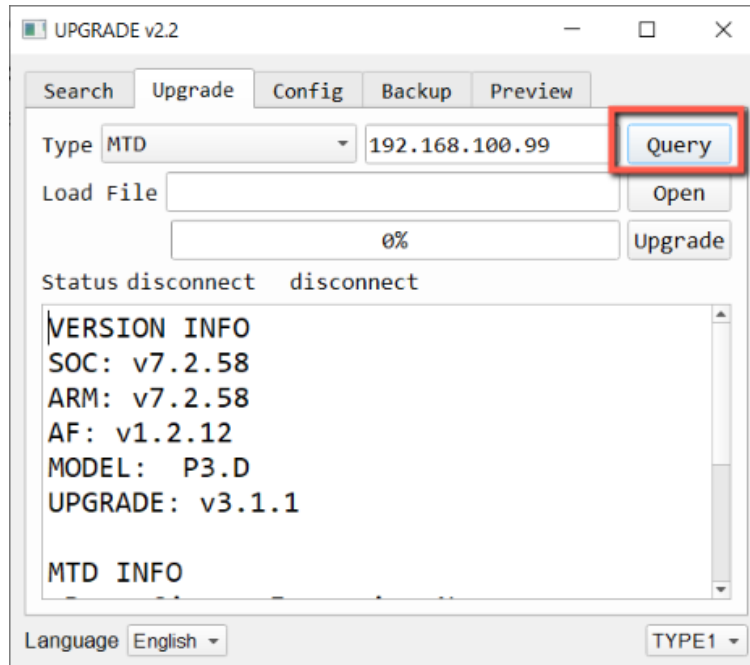
### 3.1.8. Please make sure that the IP address is the BC-50 default static IP address.

Please make sure that the IP address is the BC-50 default static IP address “192.168.100.99”.



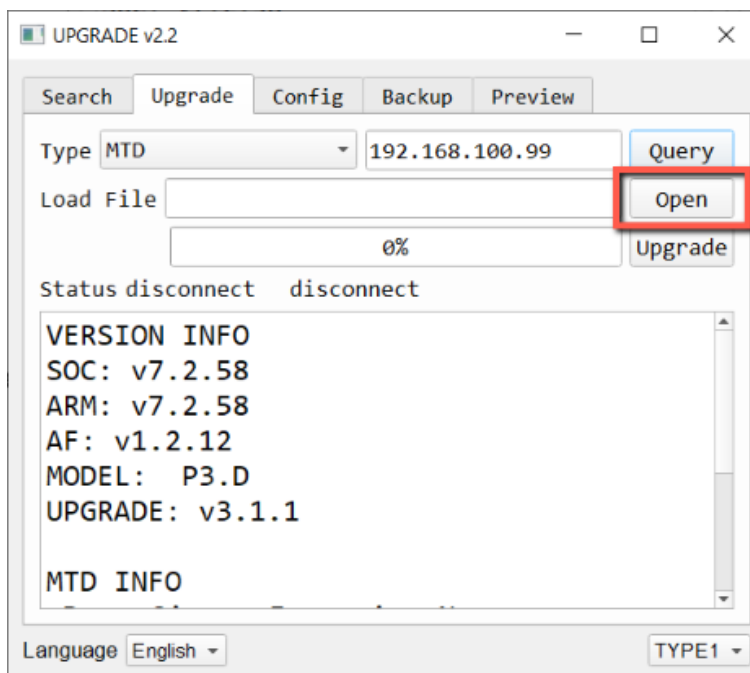
### 3.1.9. Please press the “Query” button.

Please press the “Query” button and then you can see the current BC-50 firmware version. In this example, it is “v7.2.58”.

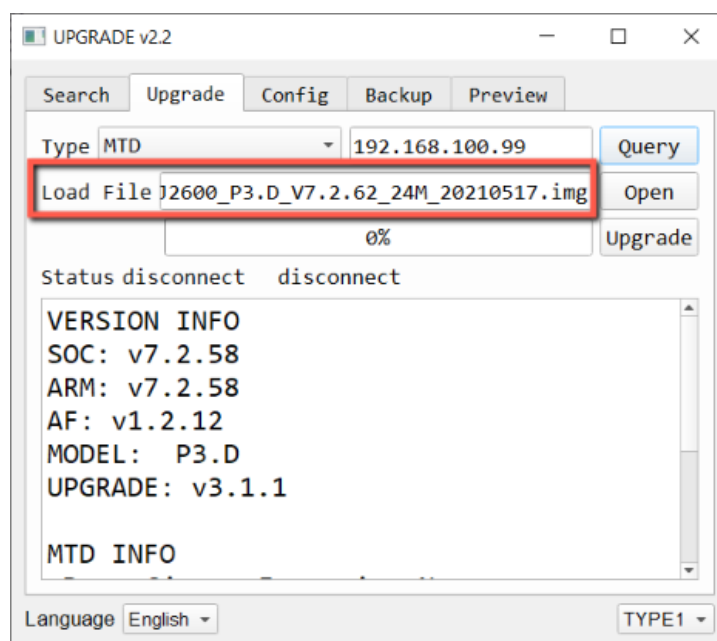
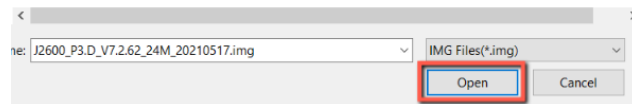


### 3.1.10. Please press the “Open” button to load the latest BC-50 firmware file.

Please press the “Open” button to load the latest unzipped firmware file from the hard disk of your laptop.

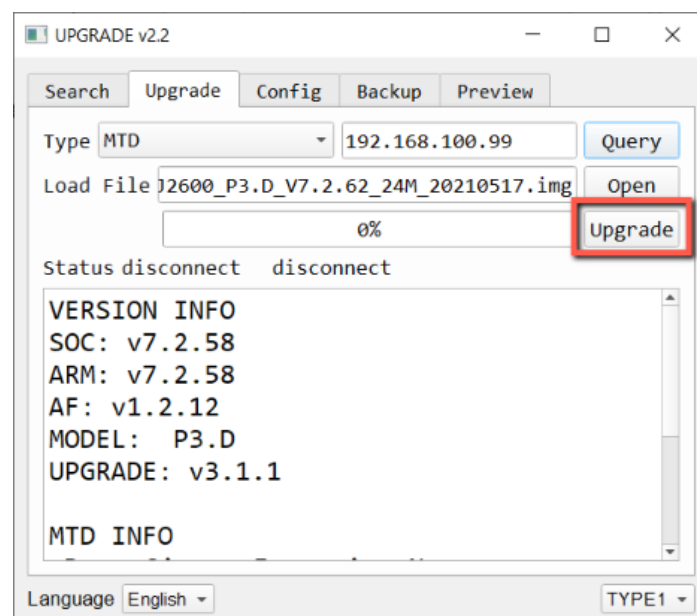


Name	Date modified	Type	Size
upgrade v2.2	9/28/2021 9:40 AM	File folder	
J2600_P3.D_V7.2.62_24M_20210517.img	5/20/2021 5:20 PM	Disc Image File	25,088



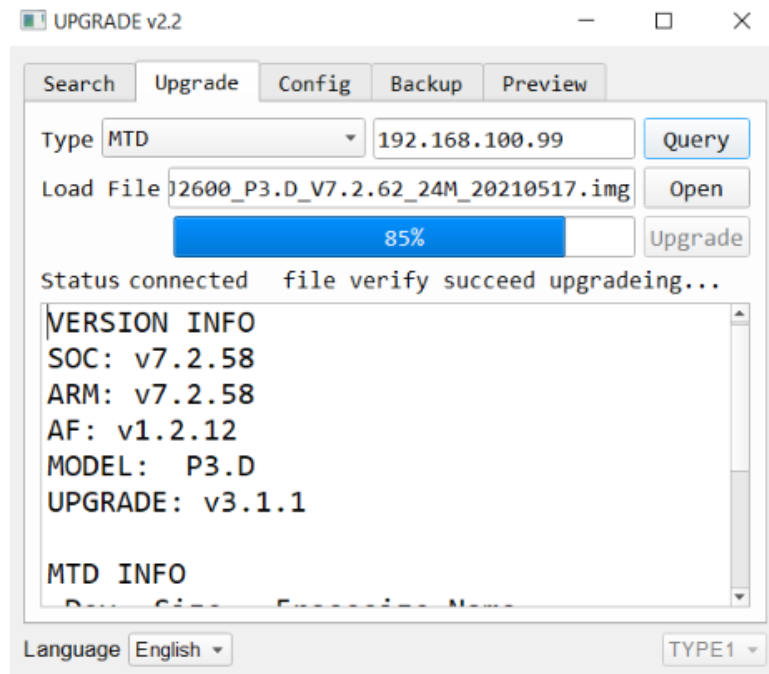
### 3.1.11. Please press the “Upgrade” button.

Please press the “Upgrade” button to start the firmware update procedure.



### 3.1.12. The firmware update procedure will be started.

The firmware update procedure will be started, and then please wait for the progress bar to reach 100%.



### 3.1.13. The “Upgrade Success” dialogue box will appear.

After the firmware upgrade progress bar reaches 100%, the “Upgrade Success” dialogue box will be shown and then please press the “OK” button. The BC-50 firmware is successfully updated.

